

Manakin Crossing

Surrounding Satterwhite's Restaurant - NEW DEVELOPERS

Broad Street & Manakin Road

Manakin-Sabot, VA | Goochland County



New Developer & Updated Pad Sites Available



PROPERTY HIGHLIGHTS

- Pad Sites from 0.4 acres & up see examples attached
- Zoned B-1
- Statement of Proffers (click here for PDF)
- Sewer and Water on West Broad St and Manakin Road (Route 250/621)
- Call for Pad Pricing



DELIVERABLES

- Developed pad sites **for retail & medical uses**
- Road access from Broad St. and Manakin Rd. and inside the center
- Water/sewer stubs
- Storm sewer and drainage
- Rough grading (not paved nor striped)
- Curb and gutter
- Common area landscaping only
- Pad site delivery
- Will construct. Construction cost additional

DEMOGRAPHICS

	3 Miles	5 Miles	10 Miles
Average HH Size	2.70	2.71	2.56
Total Population	9,566	55,435	213,432
Median HH Income	\$124,999	\$127,919	\$105,840



John Jay Schwartz, MCR, RPA
 phone (804) 350-1866
 jjschwartz@havesitewilltravel.com
 www.TheManwithSquareFeet.com

Manakin Crossing

Surrounding Satterwhite's Restaurant
Broad Street & Manakin Road
Manakin-Sabot, VA | Goochland County



JOB NO.	CS134
DESIGNED:	D.C.
CHECKED:	D.C.
DATE:	AUGUST 5, 2005
REVISED:	COUNTY COMMENTS OCT. 28, 2007
REVISED:	NO-CUT BUFFER DEC 8, 2008
REVISED:	MAY 26, 2009



PROJECT OFFICE:
 BAY DESIGN GROUP, INC.
 10000 WOODBRIDGE BLVD.
 SUITE 100
 FARMERSVILLE, VA 22434
 TEL: (804) 350-4800
 FAX: (804) 350-4807

OTHER OFFICES:
MIDDLE PENNSYLVANIA
 2000 MARKET ST.
 SUITE 200
 HARRISBURG, PA 17104
 TEL: (717) 992-2888
 FAX: (717) 992-2889

WYOMING COUNTY OFFICE:
 415 W. MARKET ST.
 SUITE 200
 WYOMING, PA 17361
 TEL: (717) 836-2828
 FAX: (717) 836-2827

PROJECT:	Manakin Village Broad Street and Manakin Road
SHEET:	Concept Plan (Exhibit A)
SHEET NO.:	C1
JOB NO.:	CS134



www.baydesigngroup.com

John Jay Schwartz, MCR, RPA
 phone (804) 350-1866
 jjschwartz@havesitewilltravel.com
 www.TheManwithSquareFeet.com

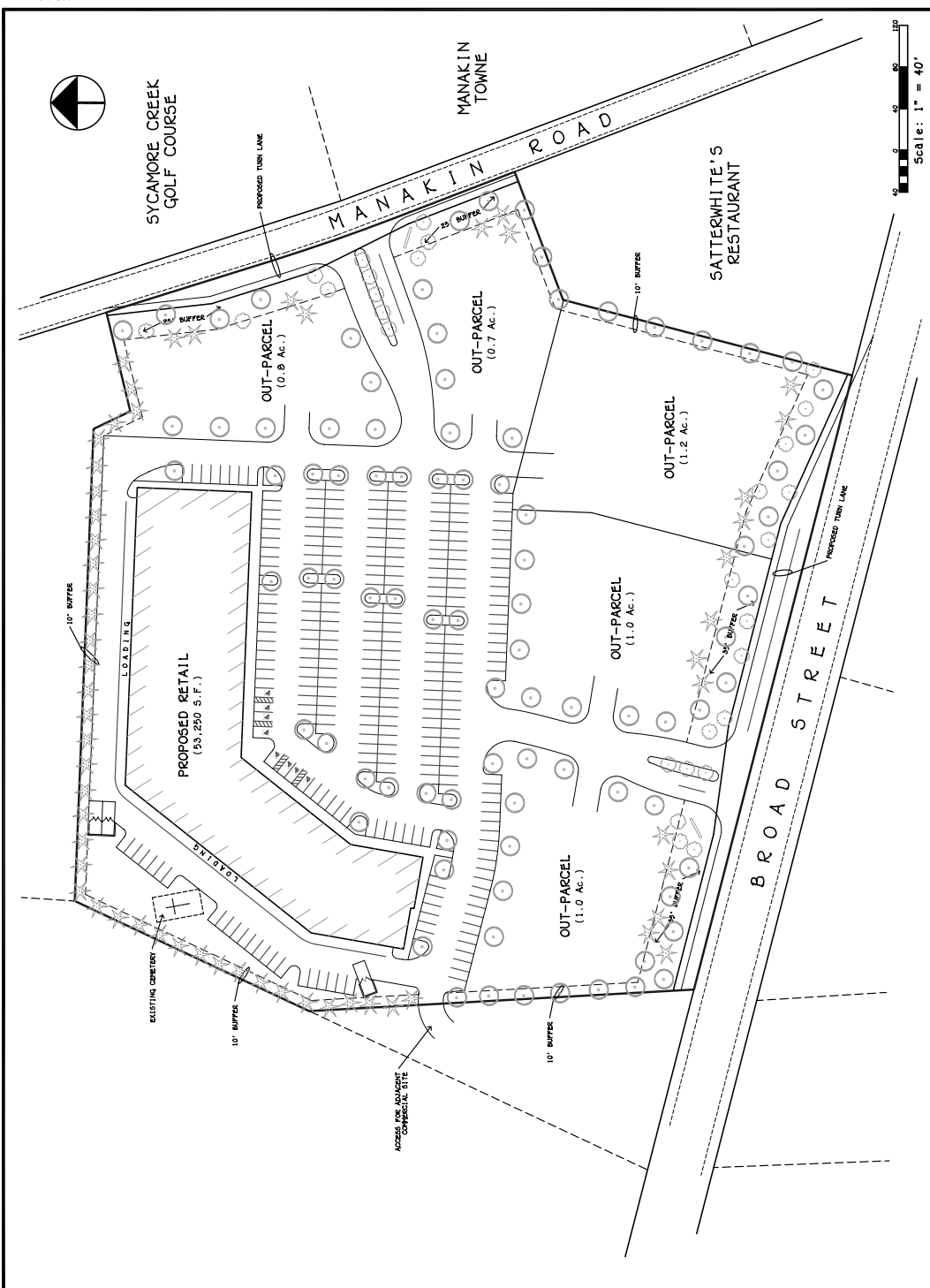


Manakin Crossing

Surrounding Satterwhite's Restaurant
 Broad Street & Manakin Road
 Manakin-Sabot, VA | Goochland County



JOB NO. 05134
 THIS DRAWING IS THE PROPERTY OF BAY DESIGN GROUP, LLC. NO PART OF THIS DRAWING OR ANY INFORMATION CONTAINED HEREIN IS TO BE REPRODUCED OR TRANSMITTED IN ANY FORM OR BY ANY MEANS, ELECTRONIC OR MECHANICAL, WITHOUT EXPRESS WRITTEN PERMISSION.
 FILED: 05/14/18
 DESIGNED: DLC
 CHECKED: DLC
 DATE: AUGUST 5, 2005
 REVISED:
 REVISED:
 REVISED:
BAY DESIGN GROUP, LLC
 10000 WOODBRIDGE BLVD.
 SUITE 100
 MANASSAS, VA 20108
 TEL: (703) 255-4400
 FAX: (703) 255-4407
 PROJECT OFFICE:
 10000 WOODBRIDGE BLVD.
 SUITE 100
 MANASSAS, VA 20108
 TEL: (703) 255-4400
 FAX: (703) 255-4407
 OTHER OFFICES:
MOBILE PENINSULA
 2000 W. STATE ST. SUITE 100
 FORT LAUDERDALE, FL 33311
 TEL: (954) 754-9900
 FAX: (954) 754-9900
THE MAN WITH SQUARE FEET
 200 W. BROAD ST. SUITE 200
 RICHMOND, VA 23219
 TEL: (804) 622-0000
 FAX: (804) 622-0000
 PROJECT:
Goochland Commercial Center
 Broad Street and Manakin Road
 Dover District
 Goochland County, Virginia
 SHEET:
 Concept Plan
 (Alternate A)
 SHEET NO.:
C1
 JOB NO. 05134



www.baydesigngroup.com

John Jay Schwartz, MCR, RPA
 phone (804) 350-1866
 jjschwartz@havesitewilltravel.com
 www.TheManwithSquareFeet.com

