

1100 Welborne Drive
Henrico County, Virginia

FOR LEASE

EXCELLENT
VISIBILITY



PROPERTY DESCRIPTION

- 765 RSF For Lease
- Three Story Office Building
- Zoning 0-2 Office
- Great West End Location Near Corner of Parham Rd & Patterson Ave
- Excellent Visibility
- Many Amenities & Services Nearby
- Immediate Occupancy

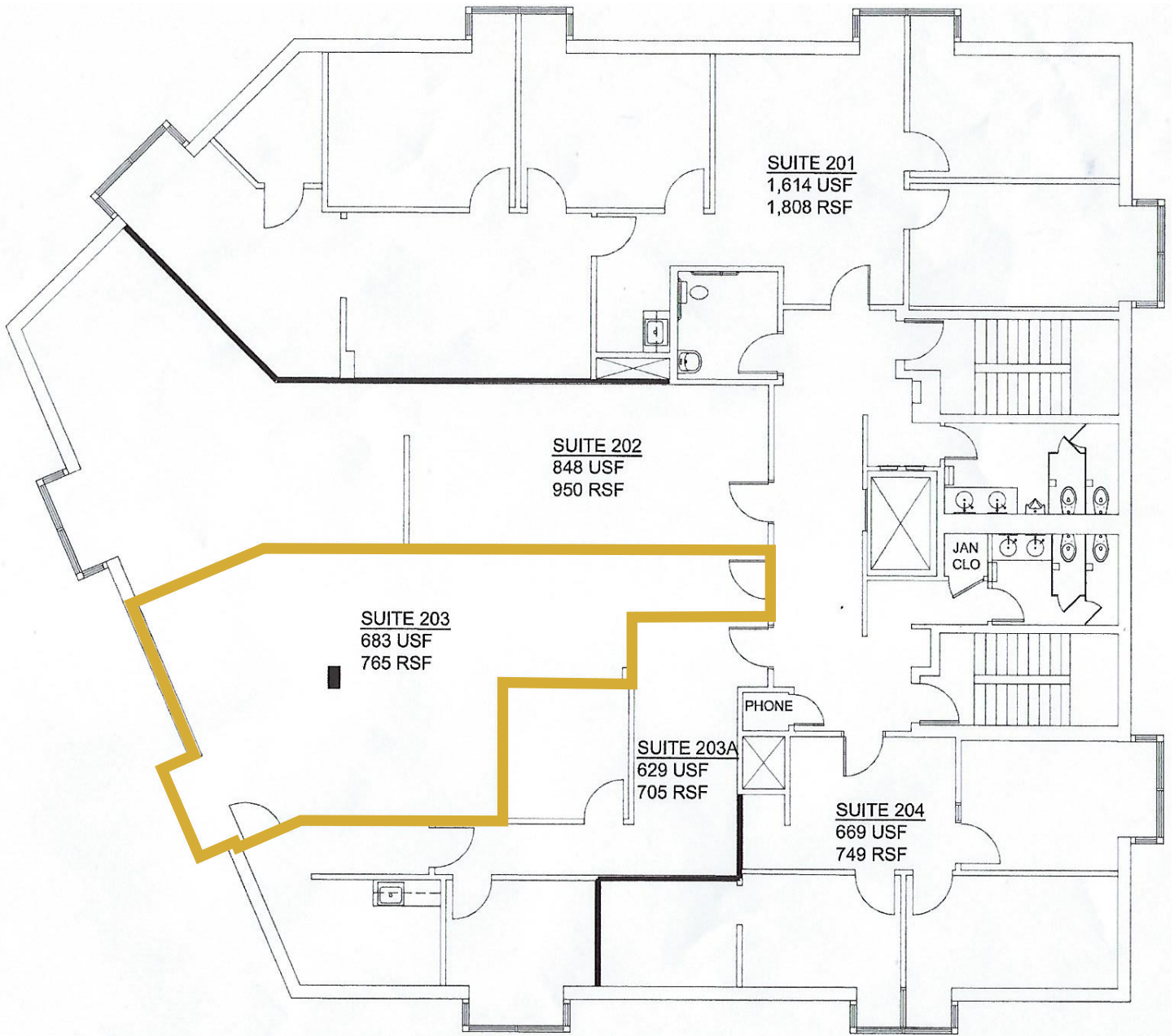
John Jay Schwartz, MCR, RPA
804.350.1866 | jjschwartz@havesitewilltravel.com
www.TheManwithSquareFeet.com



THE MAN WITH SQUARE FEET®

1100 Welborne Drive
Henrico County, Virginia

FOR LEASE



John Jay Schwartz, MCR, RPA
804.350.1866 | jjschwartz@havesitewilltravel.com
www.TheManwithSquareFeet.com

